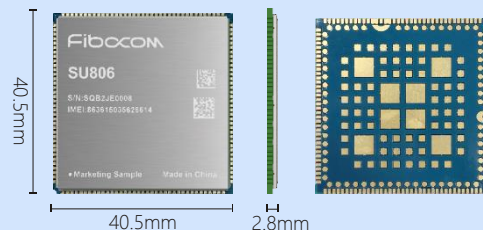


Fibocom SU806

Multi-mode Smart LTE Module Supporting Wi-Fi & BT

Key Benefits

- Quad-core Cortex-A53 64-bit processor
- Primary display support up to HD+ (1440x720) @60fps
- Support maximum two-channel camera up to 13M
- GNSS receiver available for applications requiring fast and accurate positioning in any environment
- 1080P@30fps video recording and playing
- Worldwide LTE, WCDMA, GSM coverage



UNISOC Quad-core

Fibocom's SU806 is a LTE Category 4 smart communication module which supports LTE network and WCDMA, GSM fallback. Powered by the Unisoc SL8541E platform, SU808 adopts an Quad-core Cortex-A53 processor with an open Android operating system.



1440 x 720@60fps

Fibocom's SU806 module supports a variety of long-distance communication modes as well as Wi-Fi/Bluetooth short-distance wireless transmission technology. The module also supports multi-constellation GNSS receiver (GPS/ BeiDou), which provides high-performance positioning and navigation while greatly simplifies product design. With a rich set of interfaces including MIPI/ USB/ UART/ SPI/ I2C, etc., SU806 enables much flexibility and ease of integration to meet various application demands of the IoT industry.



Wi-Fi 802.11 a*/b/g/n

The Fibocom smart module SU806 can be used in a wide range of scenarios such as smart wireless payment, smart robot, smart home, smart cities, handheld, logistic cabinet, vending machines, etc., which is an ideal solution for the core system of smart wireless products worldwide.



BT 4.2/5.0 BLE



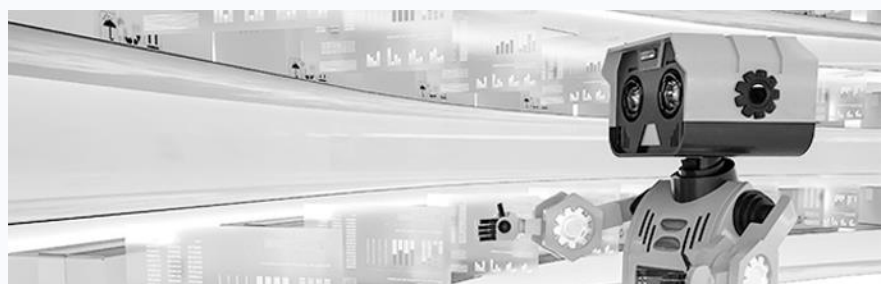
Android10



GPS/Beidou



Professional reference design and technical support



Smart(LTE Cat 4)	SU806-CN	SU806-EAU	SU806-LA
Region	China	Europe/Australia/Brazil/Asia	Latin America
Basic Features			
Form Factor	146 LCC+ 116 LGA		
CPU	UNISOC's® SL8541E, ARM® Cortex™-A53 Quad-core up to 1.4GHz		
GPU	Mali T820		
Memory	1GB/2GB LPDDR3 RAM;8GB/16GB eMMC Flash		
Dimensions(mm)	40.5x40.5x2.8		
LTE FDD	B1/3/5/8	B1/3/5/7/8/20/28	B2/3/4/5/7/17(12)/28
LTE TDD	B34/38/39/40/41	B38/40/41	B40/41
WCDMA	B1/8	B1/2/5/8	B2/4/5/8
GSM	900/1800MHz	850/900/1800/1900MHz	850/900/1800/1800MHz
Wi-Fi	802.11 b/g/n	802.11 b/g/n	802.11 b/g/n
BT	4.2 BR/EDR/BLE	4.2/5.0 DR/EDR/BLE	4.2 DR/EDR/BLE
GNSS	GPS/Beidou		
OS	Android Q		
Power Supply	3.5~4.2V		
Operating Temp	-30°C - +75°C		
Weight	9.5±0.1g		
Data Transmission			
LTE FDD(Mbps)	Max 150(DL)/ 50(UL)		
LTE TDD(Mbps)	Max 130(DL)/ 30(UL)		
WCDMA(Mbps)	HSUPA Max 11(UL)		
	HSPA+ Max 21(DL)		
EDGE/GPRS(Kbps)	EDGE: Max 296(DL)/ 236.8(UL)		
	GPRS: Max 107(DL)/ 85.6(UL)		
Multi-media			
Video Encode	1080p@30fps(H.264,MPEG4,H.263)		
Video Decode	1080p@30fps(H.264,MPEG4,H.263,VP8)		
Interfaces			
LCD	1 x 4-lane MIPI_DSI, up to (1440x720)@60fps		
Cam	2 x 4-lane MIPI_CSI, up to 13M		
UART	3 x UART up to 3Mbps		
I2C	Multiple I2C interfaces for TP/Camera/Sensor		
USB	1 x USB2.0 high-speed interface, support USB OTG(external 5V power supply)		
SDIO	1 x SD3.0		
GPIO	28 GPIOs		
Speaker	1W on 8Ω load in Class-D mode		
Receiver	1 x Mono, AB		
Mic	2 x analog microphones		
Handset	Stereo CLASS AB		
USIM	2 x SIM card,support dual-SIM dual-standby		
Keys	Power on/off /Volume up /Volume down /Reset		
Certification Approvals			
Regulation	RoHS/CCC/SRRC	RoHS/FCC/CE/Anatel	FCC/Anatel/ROHS
Operator	NA	NA	
Industry	NA	NA	

*=planning /under development

Fibocom Wireless Inc.

Telephone: +86 755-26733555 Post Code: info@fibocom.com

Address: Floor 10th, Tower A, Building 6, Shenzhen International Innovation Valley, Dashi 1st Rd, Nanshan, Shenzhen, China

Official website: www.fibocom.com

